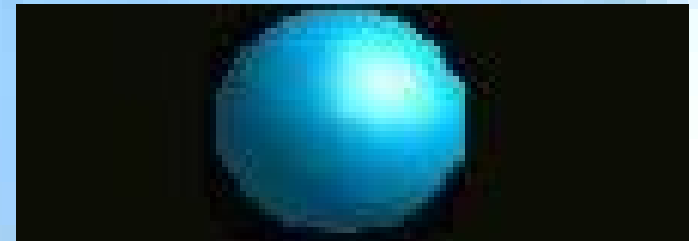


Introduction to Eclipse

Essential Training Series



gchii.org

Overview

- First time using Eclipse
 - Focus on EGL Development Tools
- Covers the basics
 - Workspace
 - Perspective
 - View



Contents

- → **Eclipse** ←
- EGL Development Tools
- Workspace
- Perspective
- View



Universal IDE

- Language Independent
 - C/C++ Developer
 - COBOL Developer
 - Java/Java EE Developer
 - Web Developer (CSS, HTML, JavaScript, XML)
 - EGL Developer
- Platform Independent
 - Linux
 - OS X
 - Microsoft Windows



Eclipse (www.eclipse.org)

■ Architecture

- Primary Programming Language: Java
- Target Platform: Java SE + OSGi
- Software License: Eclipse Public License (EPL)
- Look and Feel: Eclipse Look and Feel Guidelines

■ Support

- Software Maintenance: Open Source
- Upgrade: Eclipse Update Site Specification
- Third-party Tools: OSGi, same as first-party tools.



Java SE (www.java.net)

- Platform created by Sun Microsystems
- Abstract machine (software) specification for real machine (hardware) independence
 - Runs on Linux, OS X, Windows, and more
- Standard Edition is “desktop”
- Free license
- OpenJDK is open source



OSGi (www.osgi.org)

- “THE dynamic module system for Java”
- EDT Development Tools has hundreds of OSGi modules
- Created by OSGi Alliance industry consortium



Contents

- Eclipse
- → **EGL Development Tools** ←
- Workspace
- Perspective
- View



EGL Development Options

- Free license, open source
 - EGL Development Tools (EDT) Project
- Free license
 - EGL Community Edition
- Paid license
 - Rational Business Developer
 - Rational Developer for z with EGL



Workbench

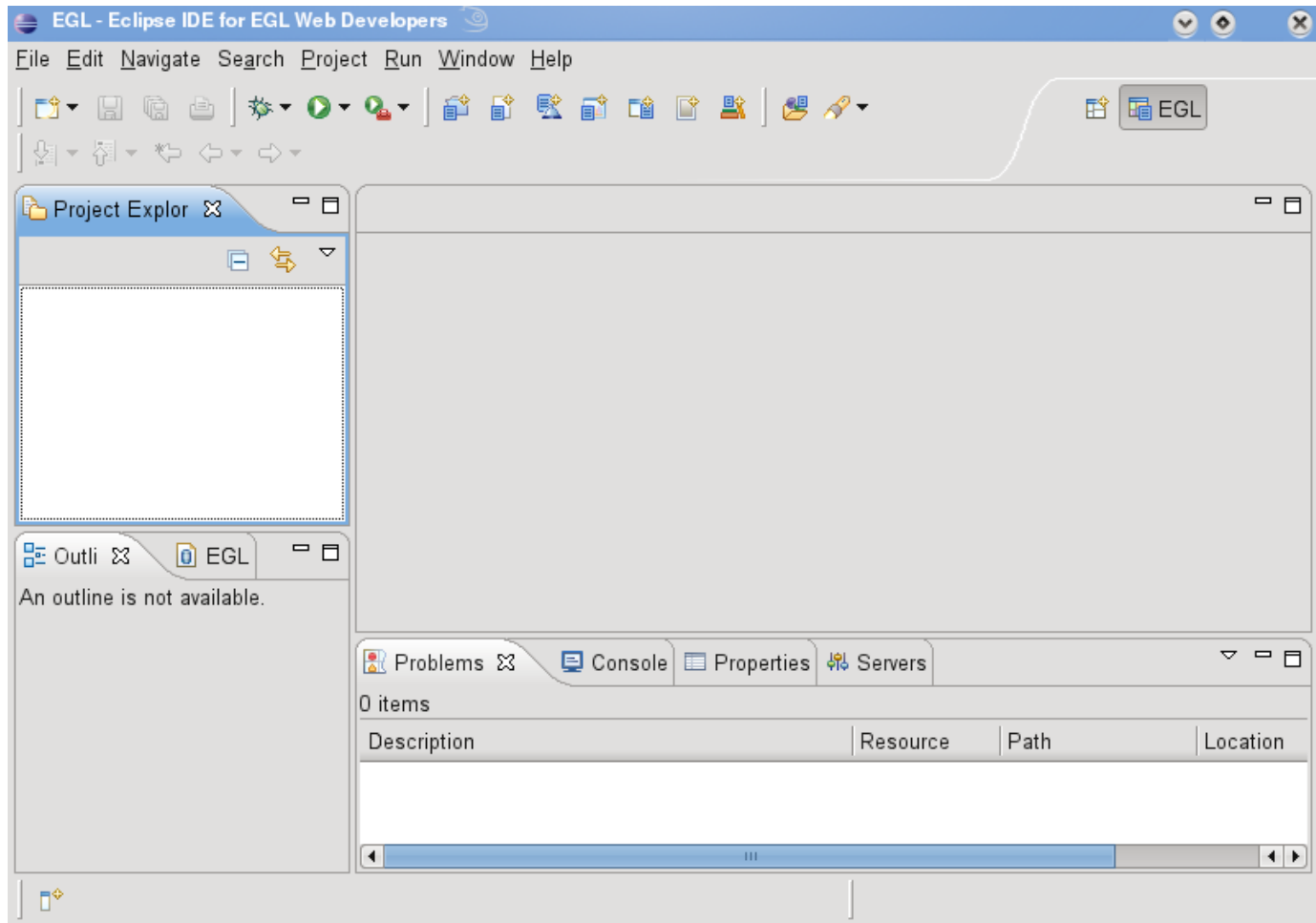
Title Bar

Menu

Tool Bar

Views

Status Bar



EGL Development Tools

- Version 0.8.2
- Starts with Eclipse “Indigo”
 - Includes modules from OSGi catalog
 - Additional OSGi modules built by EDT project
 - Installed from ZIP archive
 - Updates from Eclipse Update Site
- Supports applications servers
 - Apache Tomcat



More EGL Development Tools

- Supports generation to
 - HTML/JavaScript
 - Java
- Supports JDBC-compatible database servers, such as
 - Derby,
 - IBM DB2,
 - MySQL
 - And more.



Remote Systems Explorer

- Explore file system
 - Upload/download files, directories, directory trees
 - Delete files, directories, directory trees
 - Compare to Windows Explorer
- Command/Shell
 - Invoke commands on remote system
 - Compare to telnet, secure shell
- Connection
 - Linux
 - Windows

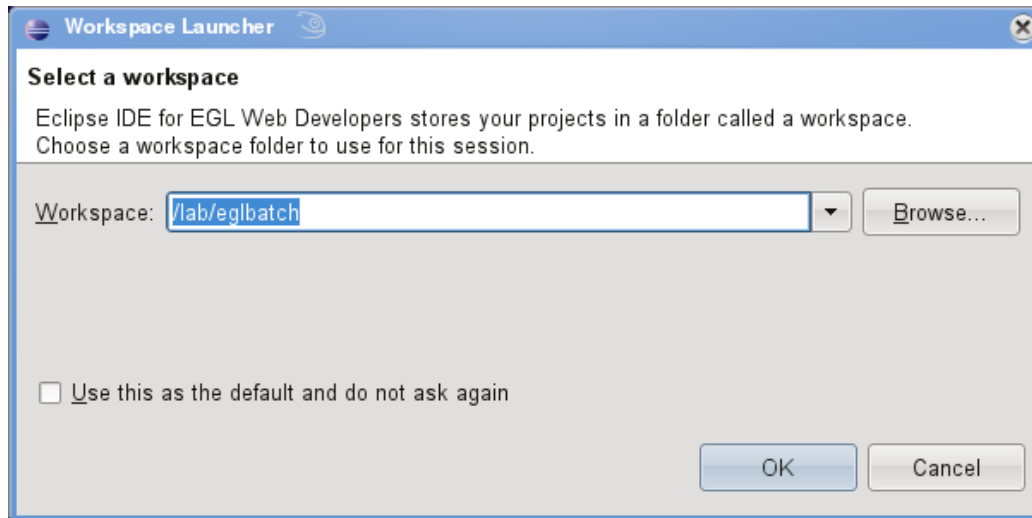


Contents

- Eclipse
- EGL Development Tools
- → **Workspace** ←
- Perspective
- View



Workspace



Definition: Workspace

- Store on your local file system
 - (Do not store on network)
- A collection of preferences, capabilities, projects
- Separate settings for each workspace
- Work with projects



Preferences

- Customize your workbench
- Separate settings for each workspace
 - Start with default settings
 - Clone a workspace
- Settings are (mostly) organized by feature
 - Window | Preferences



Capabilities



Capabilities

- A collection of tools and other components
- Activate and deactivate collection of features
 - C/C++ Developer
 - COBOL Developer
 - Java Developer
 - Java EE Developer
 - Web Developer
 - EGL Developer
- Hides unused features



Projects

- Project has directories and files
 - Create and modify files
 - Import and export files
- Archive File (ZIP)
 - Import and export a project
- Build project to produce artifacts
- Source Control Management: Share a project

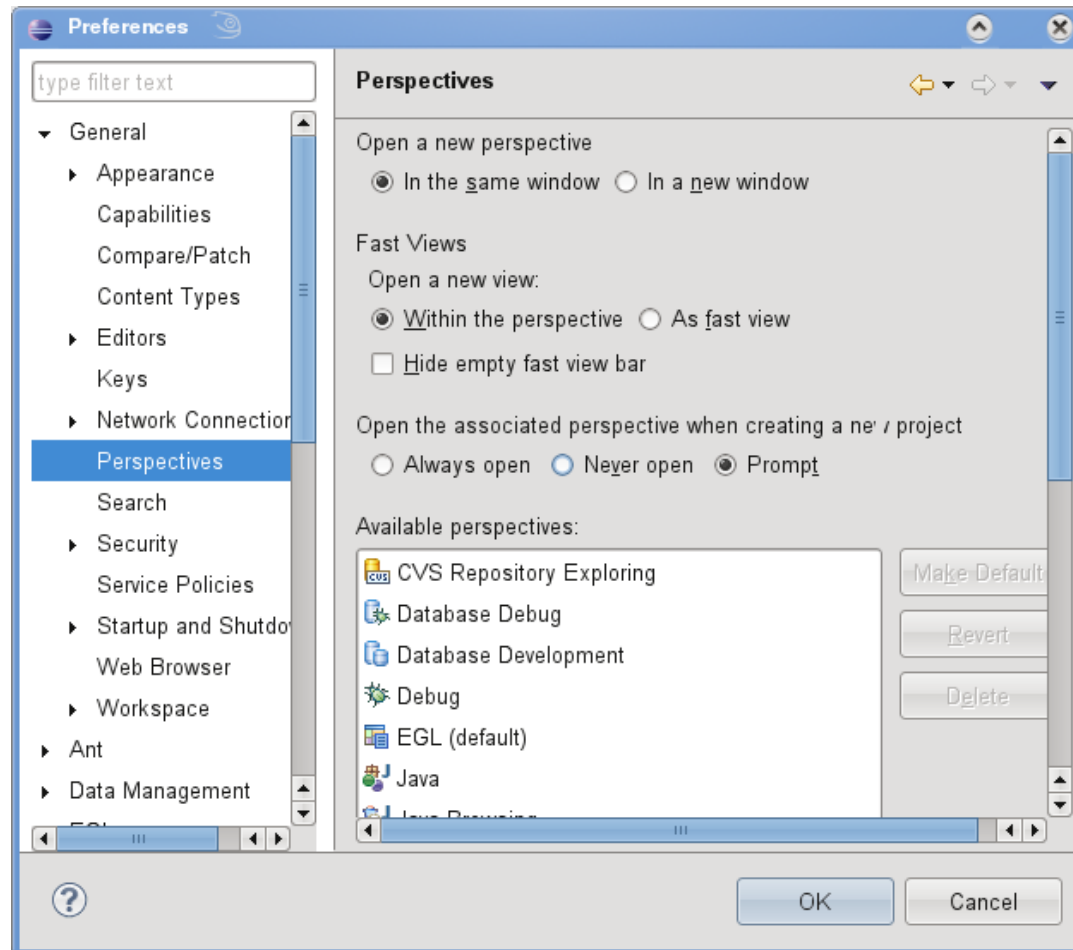


Contents

- Eclipse
- EGL Development Tools
- Workspace
- → **Perspective** ←
- View



Perspectives

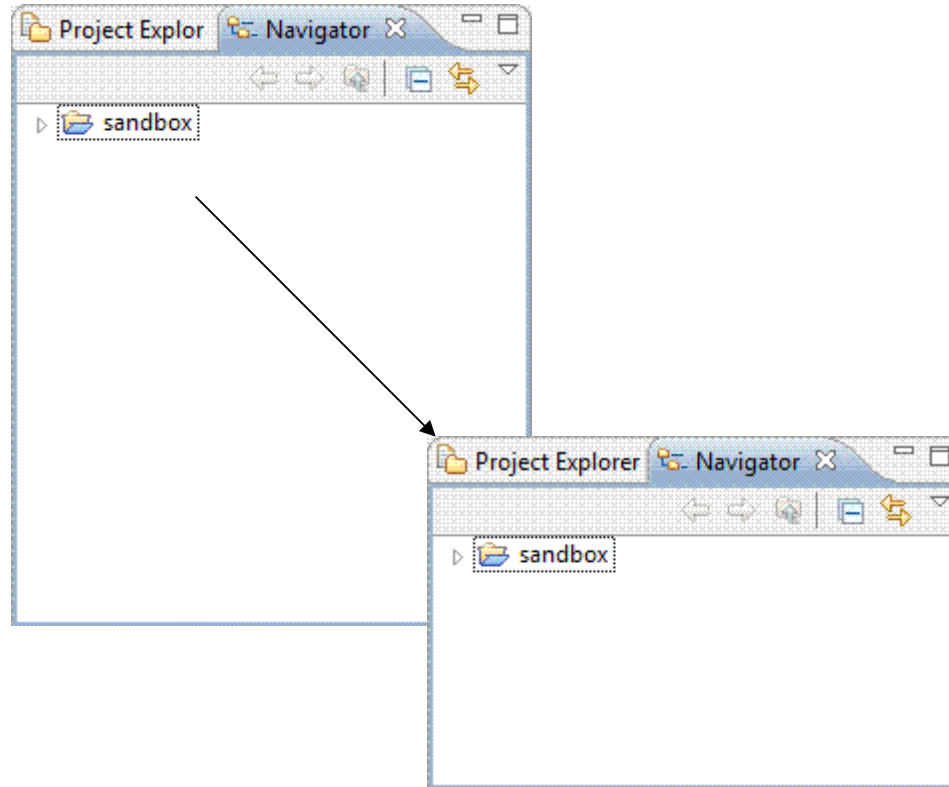


Definition

- Task-oriented
 - Designing
 - Developing
 - Debugging
 - Testing
 - Checking files into Source Control Management
- A collection of views
- An arrangement of views



Resize



Rearrange



Perspective Icons

- Open Perspective 
- Switch Perspective 



Explore Perspectives

- CVS Repository Exploring
- Database Development
- Debug
- EGL
- Java
- Team Synchronizing
- Web



Contents

- Eclipse
- EGL Development Tools
- Workspace
- Perspective
- → **View** ←


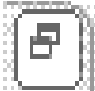





Definition: View

- Specialized
- User Interface
- Presentation Layer
- Display/Edit
- Event Driven



View Icons

- Minimize 
- Restore 
- Maximize 
- Save 
- Close 

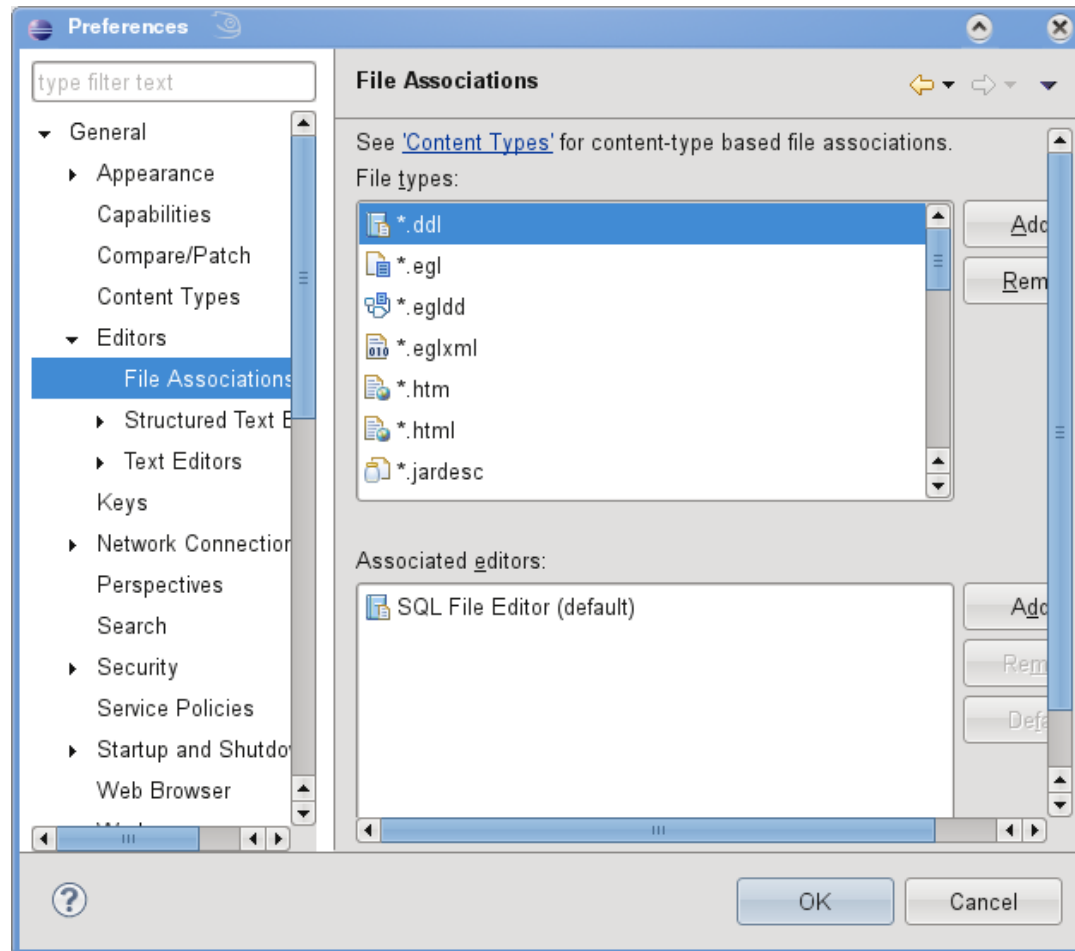


Editors

- Different editors for different file types
- Automatic by extension
- Manual



File Associations



Explore Views

- Debug
- Outline
- Problems
- Properties
- Servers
- Tasks
- Team
- Variables
- Work Items



Lab

- Exercise 1.1 - Introduction to Eclipse
 - Part 1 - Workspace
 - Part 2 - Perspective
 - Part 3 - View

